



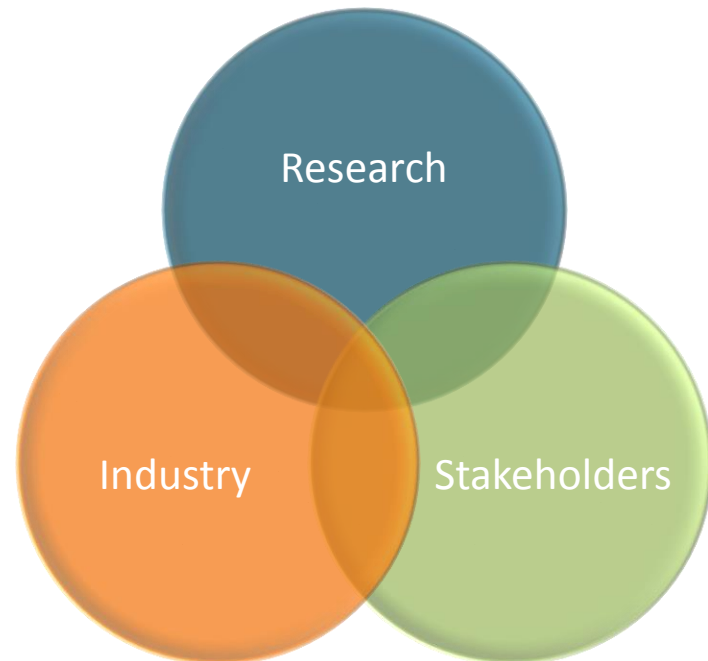
# ALISEI

Italian Cluster for Life Sciences



## *ALISEI, Advanced Life Sciences in Italy*

**Alisei** promotes interaction between the system of multi-disciplinary research, the pharmaceutical-biomedical industry and public institutions in the health sector.



# Cluster Alisei | Who we are

Cluster Alisei

## Entrepreneurship associations

- Assobiomedica
- Farindustria
- Federchimica - Assobiotec
- AIOP

## National research organisations

- CNR
- ENEA
- Istituto Italiano di Tecnologia
- Istituto Nazionale di Fisica Nucleare
- Istituto Superiore di Sanità

## Regionals partners

- ASTER (Emilia Romagna)
- Bioindustry Park Silvano Fumero (Piedmont)
- Cluster Lombardo Scienze della Vita (Lombardy)
- Consorzio per il Centro di Biomedicina Molecolare (Friuli)
- Consorzio Sardegna Ricerche (Sardegna)
- Distretto Tecnologico Campania Bioscience (Campania)
- Distretto Tecnologico Pugliese Salute dell'Uomo e Biotecnologie (Puglia)
- Distretto Tecnologico Sicilia Micro e Nano Sistemi (Sicily)
- Fondazione Toscana Life Sciences (Tuscany)
- Lazio Innova (Lazio)
- Liguria Digitale (Liguria)
- Società Consortile BioTecnoMed (Calabria)
- Veneto Innovazione (Veneto)

## Additional partners

- ITA-Italian Trade Agency



# Overview of stakeholders in the Italian System

Cluster Alisei



# Vision and Mission

Cluster Alisei

Italy's technological supercluster for life sciences aims to introduce an innovative approach to the creation of

new products  
& services

new  
technologies

new business  
opportunities

- Fostering dialogue among different actors
- Creating a system of territorial innovation at a national level
- Integrating public and private R&D with production resources
- Promoting research, technology transfer, business incubation, attraction of dedicated investments and finance
- Grouping local, industrial and research actors around priorities

**DEVELOPMENT OF AN INNOVATIVE ITALIAN LIFE SCIENCE INDUSTRY ABLE TO COMPETE AT NATIONAL AND GLOBAL LEVEL**

# Role within Italian system

Italian ministries have identified:

- **HEALTH** as a priority thematic area within the **National Intelligent Specialization Strategy (SNSI)**
- a specific role for **National Technology Clusters** such as ALISEI within the **National Research Programme** because of their ability to provide a link between the research community, business and institutions



**HEALTH**



# National Technology Clusters

Cluster Alisei

## Technological Areas

Areas of scientific know-how & distinctive industrial research



1. Aerospace
2. Agrifood
3. Blue Growth
4. Green Chemistry
5. Design, Creativity, Made in Italy
6. Energy
7. Smart Factory
8. Vehicles & mobility
9. Cultural heritage
10. **Life Sciences**
11. Technologies for Smart Communities
12. Technologies for Life Environments

Market dynamics & “economic” dimension



## Thematic Areas of National SNSI

1. Aerospace and defence
2. **Life sciences, agrifood, quality of life**
3. Smart and Sustainability Factory, Energy and Environment
4. Tourism, Cultural heritage and Creativity Factory
5. Digital Agenda, Smart Communities, Smart Mobility

# Strategy

Cluster Alisei

Multidisciplinary  
Research



Knowledge Competence Technology

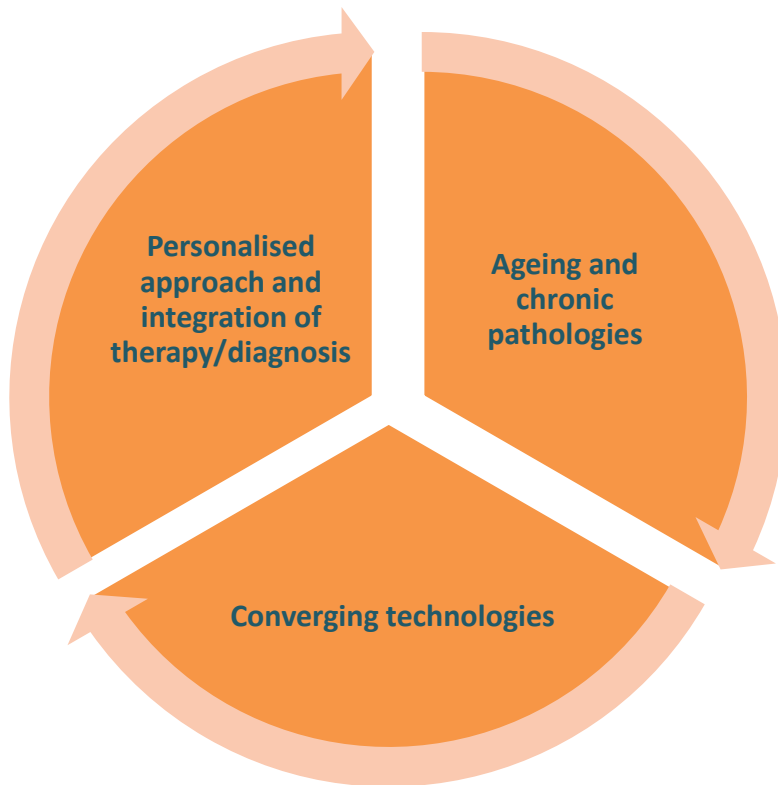




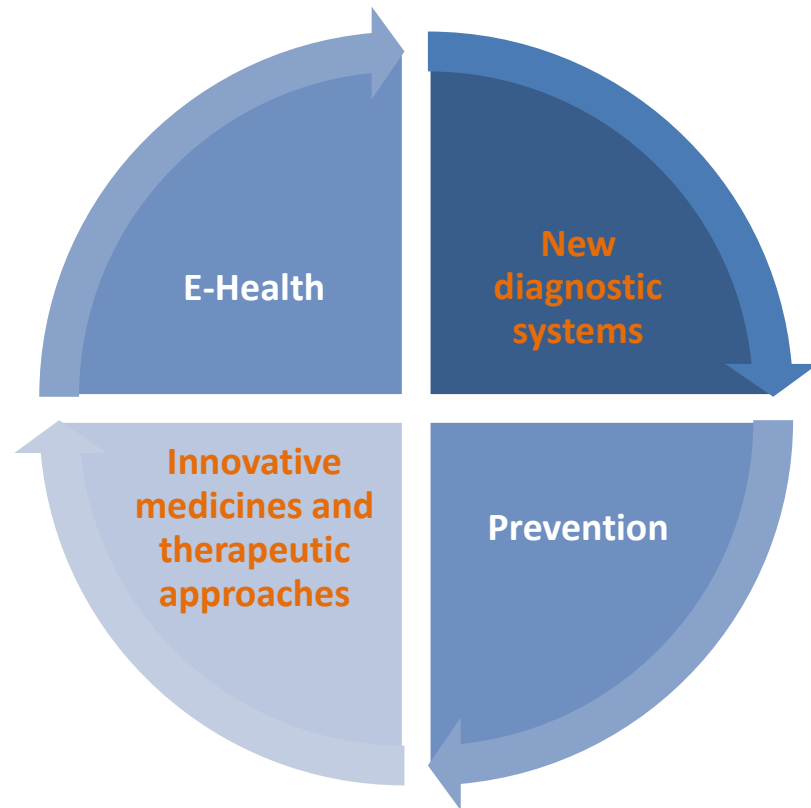
# Strategy

Cluster Alisei

## Strategic Trajectories



## Areas of Scientific & Industrial Interest



# Focus silver economy

Cluster Alisei



# Actions & Initiatives

Cluster Alisei



1 Plan and co-ordinate large scientific and technological **RESEARCH PROJECTS** exploiting private-public partnership.

2 Manage **INFRASTRUCTURE** and technology platforms as referee at international level (clinical trials).



3 Improve **TECHNOLOGY TRANSFER**, managing the transition from research to business.

4 Support business development and creation of innovative **START-UPS**.



5 Promote the access of companies to **DEDICATED FINANCE** and risk capital.

6 Attract **INVESTMENT** from a range of different countries.

# Contacts

Cluster Alisei

## ALISEI

**National Technological Cluster for Life  
Science**



### *Technical Secretariat*

Cluster Lombardo Scienze della vita  
via Pantano 9 – 20122 Milan - Italy  
Ph. +39 02 58370283



[www.clusteralisei.it](http://www.clusteralisei.it)



[info@clusteralisei.it](mailto:info@clusteralisei.it)



@clusteralisei